



Coding Solutions for  
**Dairy**





**Discover printer systems you can always rely on - since 1975.**

For over 40 years, Hitachi has developed and produced high-performance industrial printers.

The traceability requirements for the dairy industry creates a need for more and more tagged information. Today's dairy processors and packers use a wide variety of technologies and materials. To handle this diversity of materials, needs and requirements of customers and industry pose a challenge for printers.

The key requirements of coding and marking equipment in the dairy industry are accuracy and machine durability. It is important to us that you achieve the highest quality standards and protect your brand reputation by using printers that offer high durability in difficult applications, washdown capability and traversing printhead functionality.

# Explore what we can offer for you

## Are you looking for...

### ... simplicity and flexibility?



Our coding machines are developed to meet the demanding requirements of dairy industry customers. Modern industrial protocols makes physical and system integration easy and offer flexibility to market changes or new requirements. Hitachi inkjet printers offer durable and flexible print heads. With a print head cable measuring six metres, our printheads allow every requested position for even closer printing and improved print quality.

### ... a coding solution that resists harsh environments?



As well as meeting production and efficiency targets, our printers can help you meet industry environmental and hygiene requirements. For example, the stainless steel cabinet of the UX Series enables wash-down and dust protection. This makes our advanced coding systems the ideal choice for a variety of coding and marking applications in the dairy industry.

### ... to reduce your costs?



Our preventative maintenance programme further reduces the unnecessary replacement of complete circuits or cores. At the heart of the UX Series inkjet printer is a diaphragm based circulation system leading to a reduction in make-up and running costs. We offer support in TCO Calculations with the initial price and factors such as reliability, service cost and the cost of consumables over the machine's lifetimes.

### ... to be sustainable?



Committed to supporting your environmental targets, our cartridge is designed to utilize all fluids, leaving behind a recyclable container. Empty cartridges are sealed after removal, eliminating the potential release of hazardous solvents. We have several inks which are MEK (Methylethylketon) free without losing quality.



# Our Coding Solutions

## Continuous Inkjet Printer (CIJ)



Hitachi's continuous inkjet printers are well known for their usability and optimum environmental credentials. Our wide range of CIJ printers include High Speed, Pigmented, Micro-nozzle, Twin nozzle and Ultra-High speed printer.

The UX Series features a new cartridge-type system, which makes ink replacement clean and simple without hazardous fluid spills during refill.

They are capable of applying best before dates, logos, barcodes, lot numbers and data matrix codes, which makes the new UX-Series the perfect solution for both complex and standard dairy applications.

The stainless steel cabinet meets IP65 and allows a wash-down with pressured water and industrial detergent, to meet any environment and hygiene requirements.

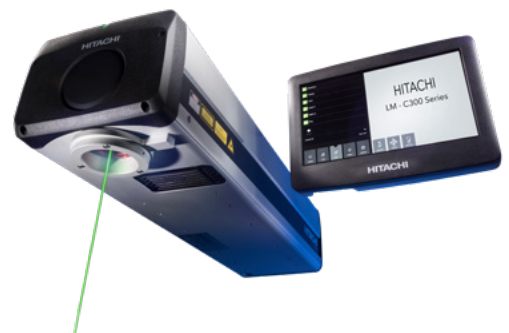


## CO2 Laser Coder



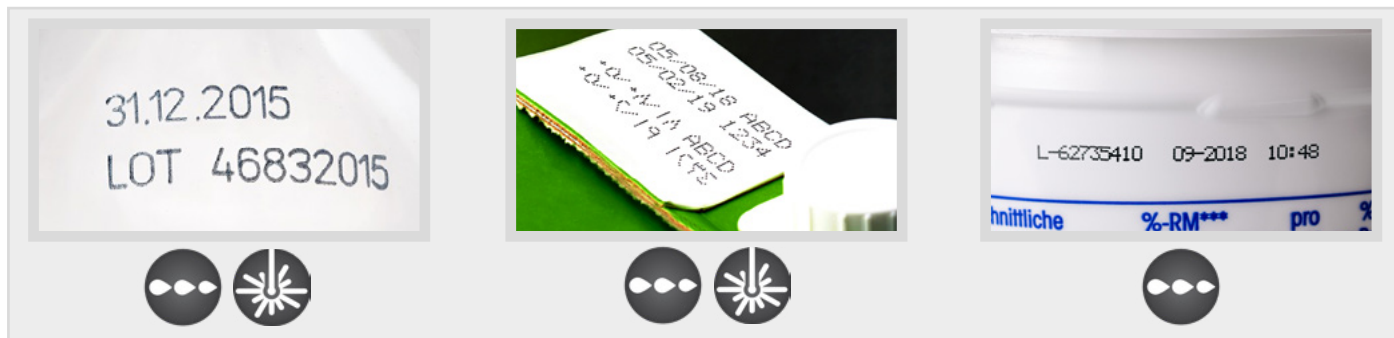
Our CO2 Laser Coder offers high production speed, low cost of ownership, high quality printing and compact measurements.

The wide range of wavelengths as well as the flexible power and focal lens configuration ensures performance ideally suited to coding on various packaging substrates used in the dairy industry, including paper, cardboard, glass or plastic.

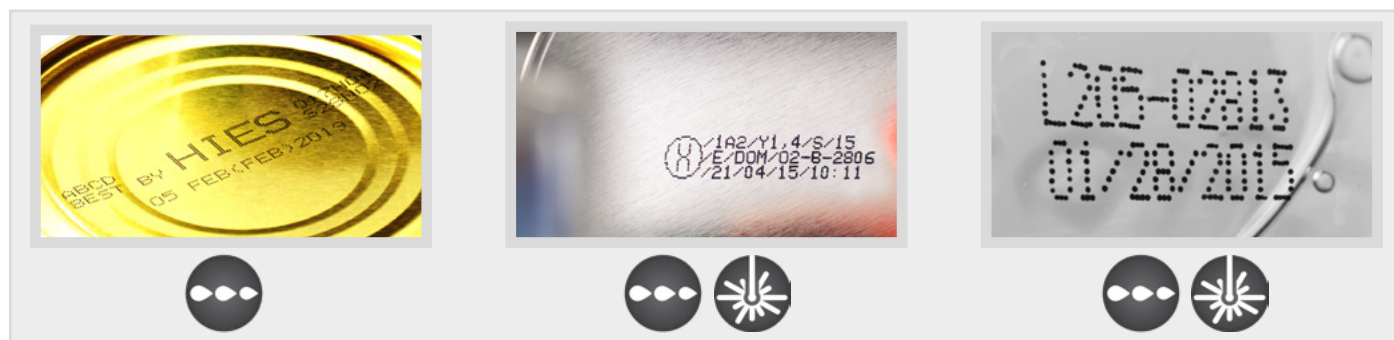


# Dairy Industry Packaging Type

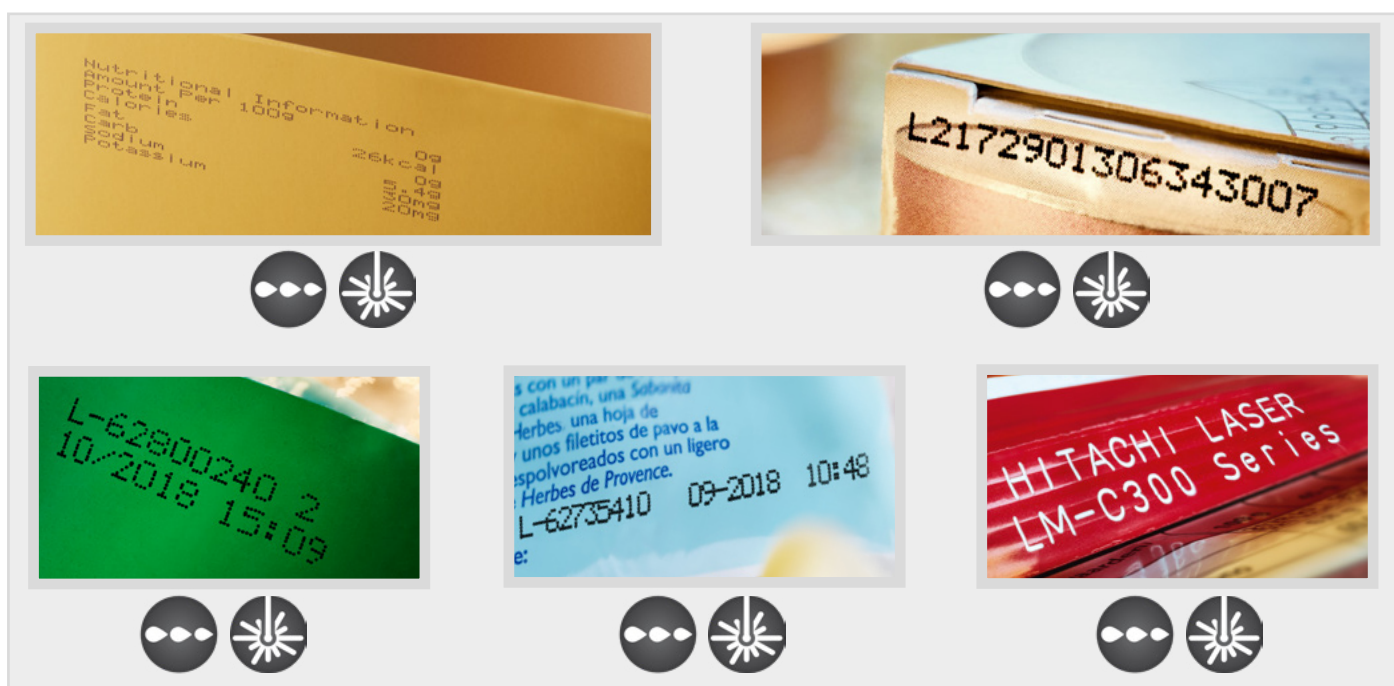
## Jugs, Bottles, Aseptic Containers, Rigid Plastic Containers, Film lids



## Metal cans, Jars, Glass Bottles



## Paperboard cartons, Cartons, Bags, Films, Shrink Wraps



# Future-Proofing The Dairy Industry

With an increasing demand for traceability and connectivity within the dairy industry, future food labelling legislation is not likely to be less demanding. Our printers are future-proof with open industrial standard protocols and IoT capability. This will enable you to react to changing trends, customer demands or legislation without having to invest in new equipment.

But how can industrial printers use IoT to reduce costs and maximize uptime?

Anyone who works in manufacturing knows what 'a spanner in the works' means. It is when a line grinds to a halt due to an unforeseen incident and you start losing money until the systems are back on line. Today's production facilities are under constant pressure to minimise downtime and increase production outputs. This is where the industrial internet of things (IIoT) is making a difference.

Industrial IoT technology is accelerating operations across manufacturing, making processes and devices smarter and improving the life of factory equipment. Analysts predict that IoT applications for manufacturing could create \$3.7 trillion in value by 2025, increase productivity by 25% and reduce downtime by up to 50%.\* One area that is achieving new levels of efficiency, cost savings and sustainability in manufacturing is industrial IoT printers.



\* McKinsey Global Institute. The Internet of Things: Mapping the Value Beyond the Hype. June 2015.



# Worldwide Sales and Service Network

Are you looking for a proven global company that can work with you at a local level?

Hitachi offers a global sales and service network when marking, coding and traceability challenges demand a coordinated answer. For each of your locations, and across your entire organization we will champion your goals by providing international consistency, global perspective, broad expertise and coordinated service with dedicated contacts.

Our global team applies its worldwide technical expertise to your unique challenges in a consistent way. Tangible deliverables and proven solutions are results of our business analysis and project implementation. Mechanical integration is supported by 3D CAD design, electrical schematics, customized circuits, application specifications and customized documents. Plus cross border project management and coordination between suppliers, OEM's and end users are part of our deliveries. You gain more visibility and save time and money.





## Head Office

---

### Japan

Hitachi Industrial Equipment Systems Co., Ltd.  
Phone: +81 3 3258 1111  
[www.hitachi-ies.co.jp](http://www.hitachi-ies.co.jp)  
[info@hitachi-ds.com](mailto:info@hitachi-ds.com)

## Sales Offices

---

### America

Hitachi America, Ltd.  
Phone: +1 866 583 0048  
[www.hitachi-america.us/ijp](http://www.hitachi-america.us/ijp)  
[inkjetprinters@hal.hitachi.com](mailto:inkjetprinters@hal.hitachi.com)

### Asia

Hitachi Asia Ltd.  
Phone: +65 6305 7400  
[www.hitachi.com.sg](http://www.hitachi.com.sg)

### China

Hitachi Industrial Equipment Systems Co., Ltd.  
Phone: +86 21 5489 2378  
[www.hitachi.com.cn](http://www.hitachi.com.cn)

### Europe

Hitachi Europe GmbH  
Phone: +49 211 5283 0  
[www.hitachi-industrial.eu](http://www.hitachi-industrial.eu)  
[info@hitachi-ds.com](mailto:info@hitachi-ds.com)

### Oceania

Hitachi Australia Pty Ltd.  
Phone: +61 2 9888 4100  
[www.hitachi.com.au](http://www.hitachi.com.au)



Follow us:



All company and product names in this brochure are the property of the respective companies.